

CORRECT REMOVAL AND RE-APPLICATION OF A SURGICAL MASK



PRAXIS DR. DR. TRÖLTZSCH
ZENTRUM FÜR ZAHN-, MUND- UND KIEFERHEILKUNDE

MASK IS APPLIED CORRECTLY:

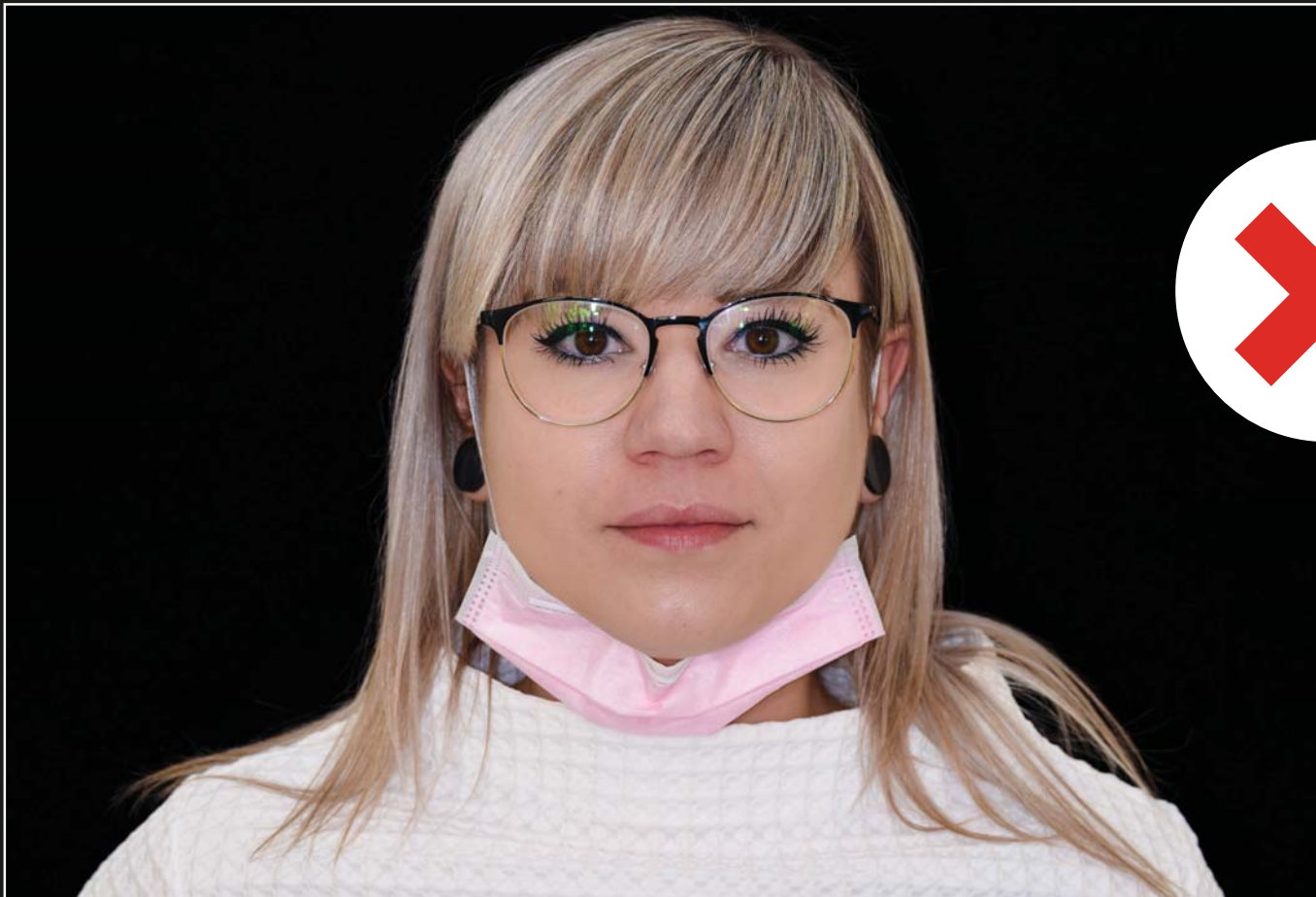
A close and tight fit of the mask to the facial skin is of crucial importance.



PRAXIS DR. DR. TRÖLTZSCH
ZENTRUM FÜR ZAHN-, MUND- UND KIEFERHEILKUNDE

WRONG:

The outer surface of the mask must be considered as contaminated. Therefore any direct contact to the outer mask surface must be avoided.



PRAXIS DR. DR. TRÖLTZSCH
ZENTRUM FÜR ZAHN-, MUND- UND KIEFERHEILKUNDE

CORRECT REMOVAL:

1. Wash and DISINFECT the hands!
2. Grab the strings behind the ears and pull them sideways without touching the outer surface of the mask



CORRECT REMOVAL:

Pull the mask away from the facial skin until the outer surface is out of reach.



POSITION BEFORE REAPPLICATION OF THE MASK:

The mask is held away from the body so that it does not touch anything.



PRAXIS DR. DR. TRÖLTZSCH
ZENTRUM FÜR ZAHN-, MUND- UND KIEFERHEILKUNDE

REAPPLICATION OF THE MASK:

The straps are taken with both hands to prevent direct contact to the outer surface of the mask.



PRAXIS DR. DR. TRÖLTZSCH
ZENTRUM FÜR ZAHN-, MUND- UND KIEFERHEILKUNDE

REAPPLICATION OF THE MASK:

Apply soft pressure with the mask to the face to prevent any twisting of the mask.



REAPPLICATION OF THE MASK:

Reapply the straps behind the ears.



REAPPLICATION OF THE MASK:

The position of the mask is corrected from the inside (hands were cleaned before the procedure). Make sure the mask fits tightly again. If direct contact to the outer surface of the mask is unavoidable to increase the fit the hands must be disinfected immediately as they must be considered contaminated.



PRAXIS DR. DR. TRÖLTZSCH
ZENTRUM FÜR ZAHN-, MUND- UND KIEFERHEILKUNDE